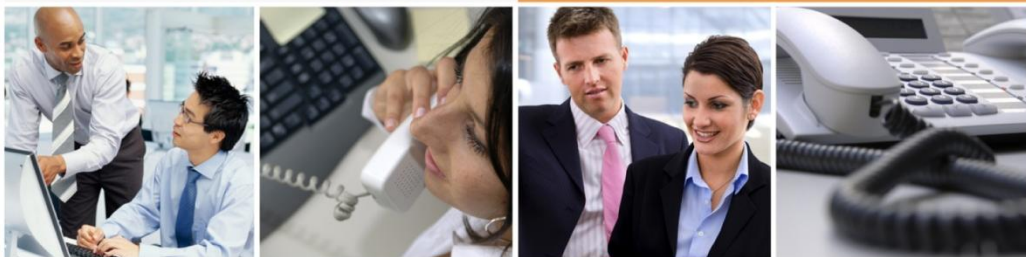


## XO SIP Service

Customer Configuration Guide for  
Sutus BC200 with XO SIP



## 1. Overview

### **About This Document**

This document describes interoperability between XO SIP Package 1 (G.711) and Sutus BC200 IP PBX, deployed with an XO-provided Cisco 2432 IAD as the router/demarcation device. This document assumes the audience has a general understanding of network provisioning and the connectivity requirements of XO Communications SIP service offering.

### **Known Issues**

While XO certifies interoperability between XO SIP service and the IP PBX as outlined herein, the following known issues were identified during Interoperability testing. The customer should be aware that certain features and functions may not be fully supportable. In some cases, special configurations and/or PBX software patches may be available from the vendor.

- Local operator calls (dial '0') not supported. According to Sutus, this will be fixed version is 1.6.6, planned for 9/09.
- Sutus BC200 does not have 'hunt group' feature, but does support "ring all" group
- Sutus BC200 always sends pilot number as an outgoing Calling Line ID number for any extension
- If an incoming PSTN call is forwarded off-net, the off-net PSTN phone will see the caller ID of the Sutus PBX pilot DID
- XO SIP optional Call Center feature is not supported with Sutus BC200
- Sutus BC200 does not support CFB (Call Forward Busy). It supports CFA (Call Forward Always) and CFNA (Call Forward No Answer).
- Sutus BC200 does not support conference call with more than 3 parties (including extension itself)
- T.38 codec for FAX is not supported. XO and Sutus recommend using analog lines off of the XO-managed router's FXS ports for FAX (available with 1.5 Mbps and 3.0 Mbps XO SIP).

### **Registration Method**

Static registration is utilized between the Sutus BC200 IP PBX and the XO call agent.

### **XO SIP Service Packages Supported**

Pkg	Codec	DTMF	Fax
1	G.711	RFC2833 (in-band RTP DTMF fall-back)	Not support—see known issues.
2	G.729a	<b>Not Supported</b>	<b>Not Supported</b>

## 2. Testing of Sutus BC200

### 2.1. Software and Hardware Versions Tested

1. Cisco 2400 used as a router  
Cisco IOS Software, 2400 Software (C2430-IS-M), Experimental  
Version 12.4(20060718:201451) [acphan-V124\_4\_T2\_1 104]  
System image file is "flash:c2430-is-mz.xo"
2. Sutus  
  
Software version Sutus : 1.6.4.090709.18
3. 2 - IP Phone  
Model no.: Polycom - Soundpoint IP 330 SIP
4. ATA for analog phone  
  
Grandstream "Handy Tone 286".

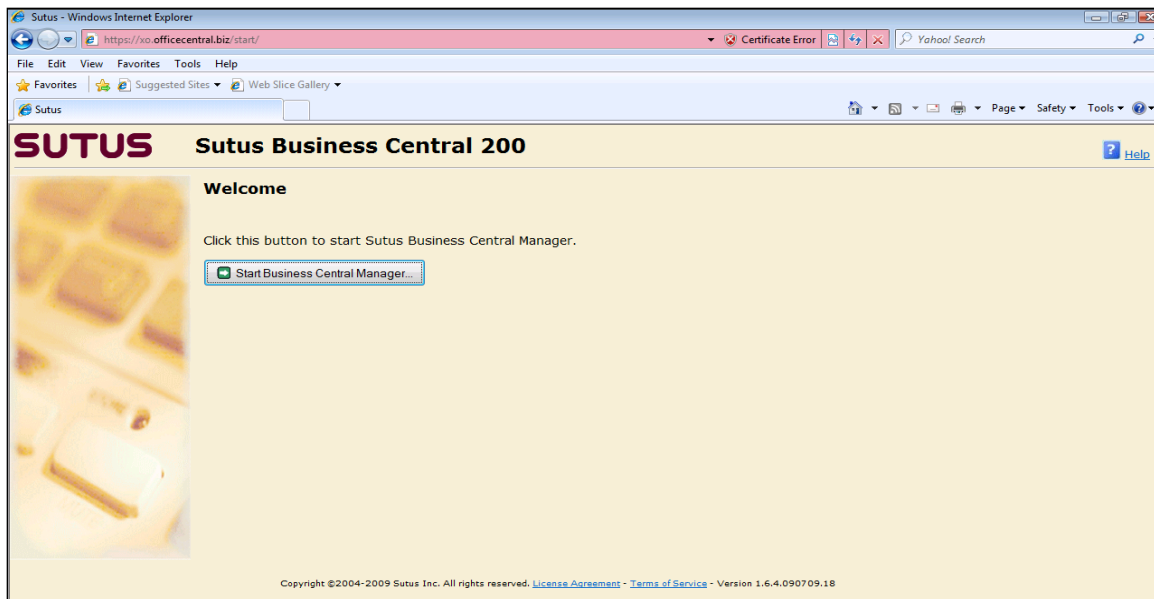
### 3. Sutus BC200 Configuration

**In This Section** XO performed the minimum amount of configuration required to achieve successful completion of test calls over XO SIP. It is beyond the scope of this document and the testing efforts to show a complete configuration, therefore screenshots of the GUI interface are provided only for the details of the SIP trunk configuration that are relevant to interfacing with XO's SIP product.

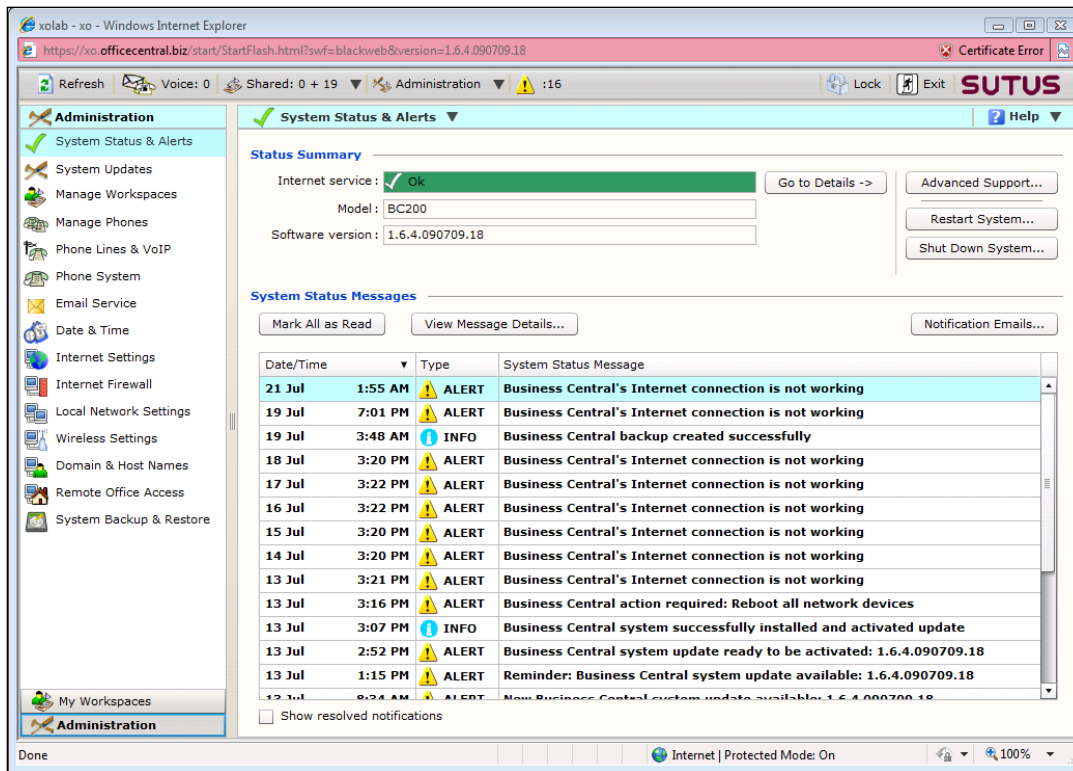
This section contains screenshots which detail the SIP trunk configurations.

#### Sutus Login:

Login to Sutus GUI via web browser "https://central/start

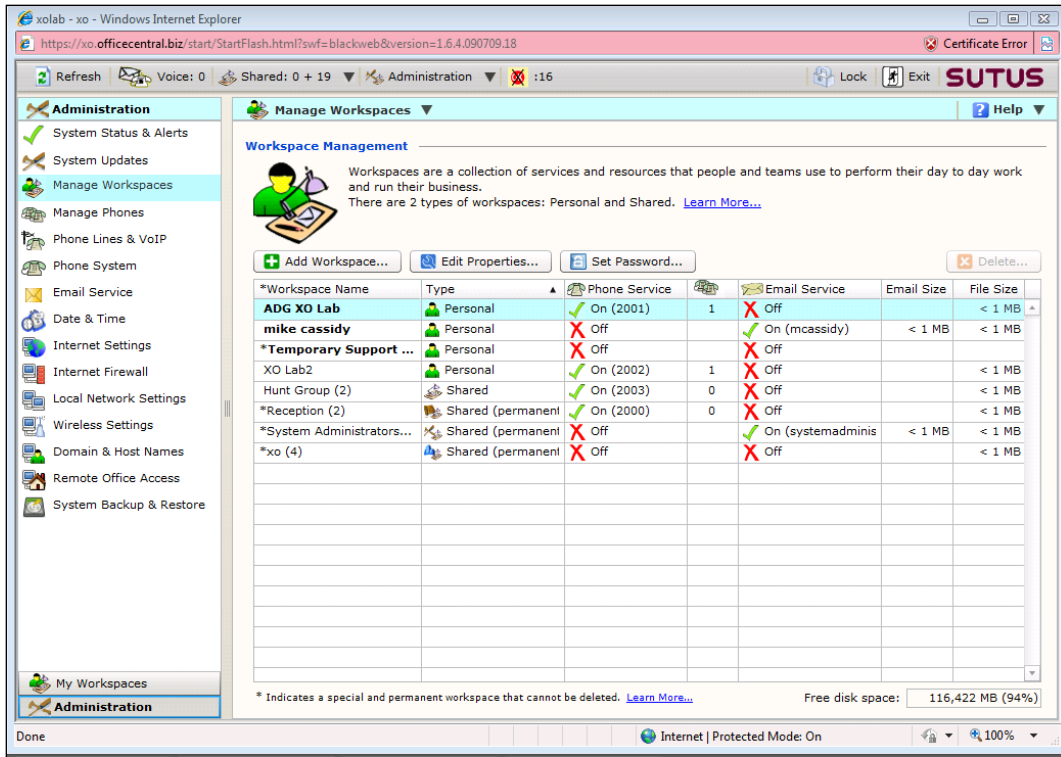


#### System Status & Alerts

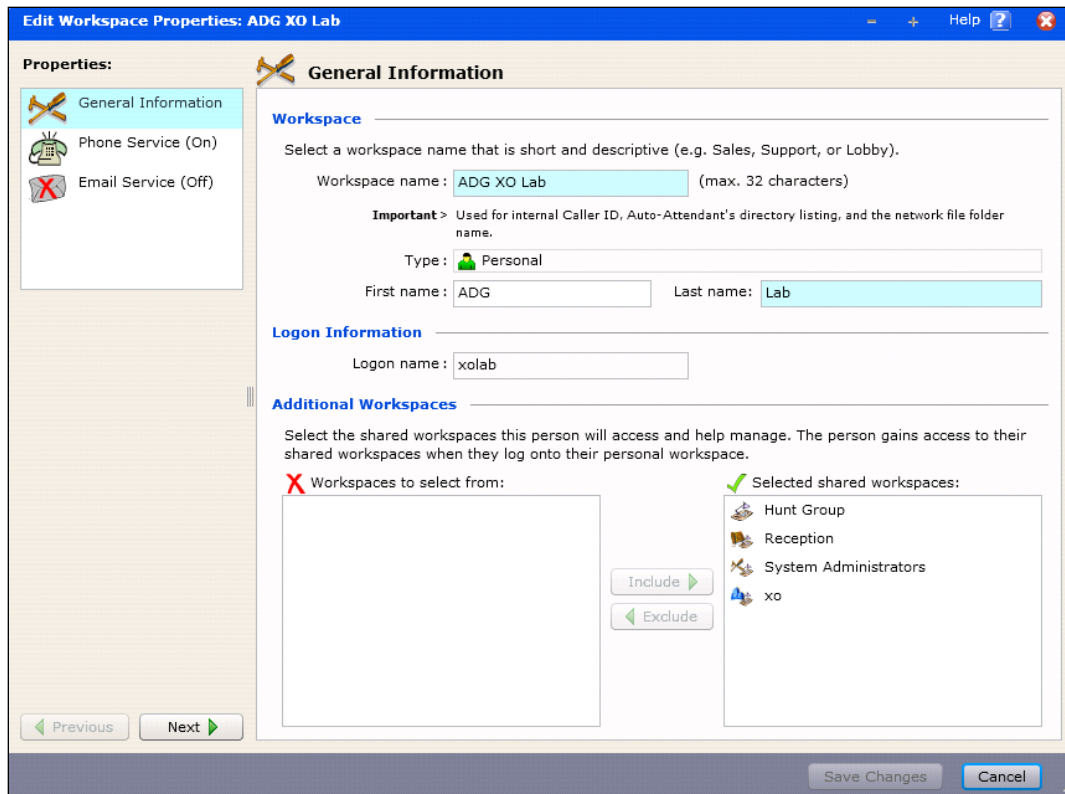


## Manage Workspaces:

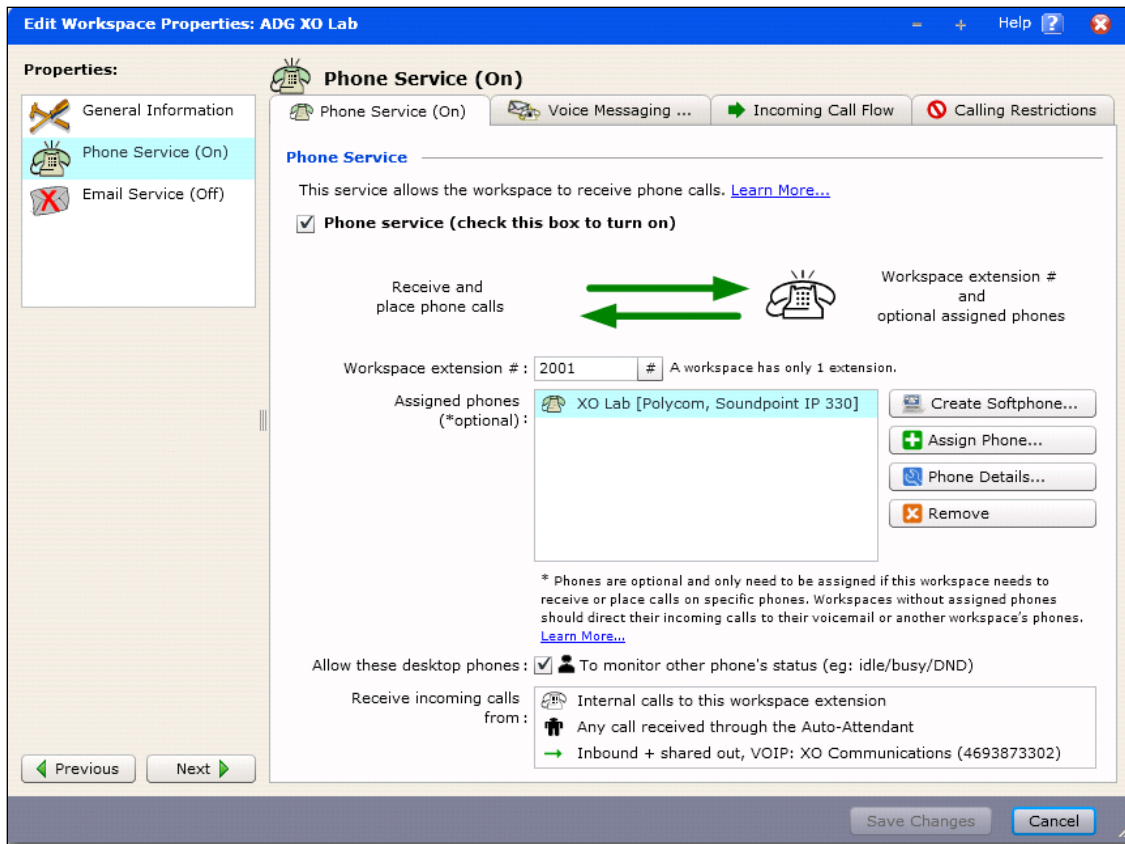
- Place to add user (work space)



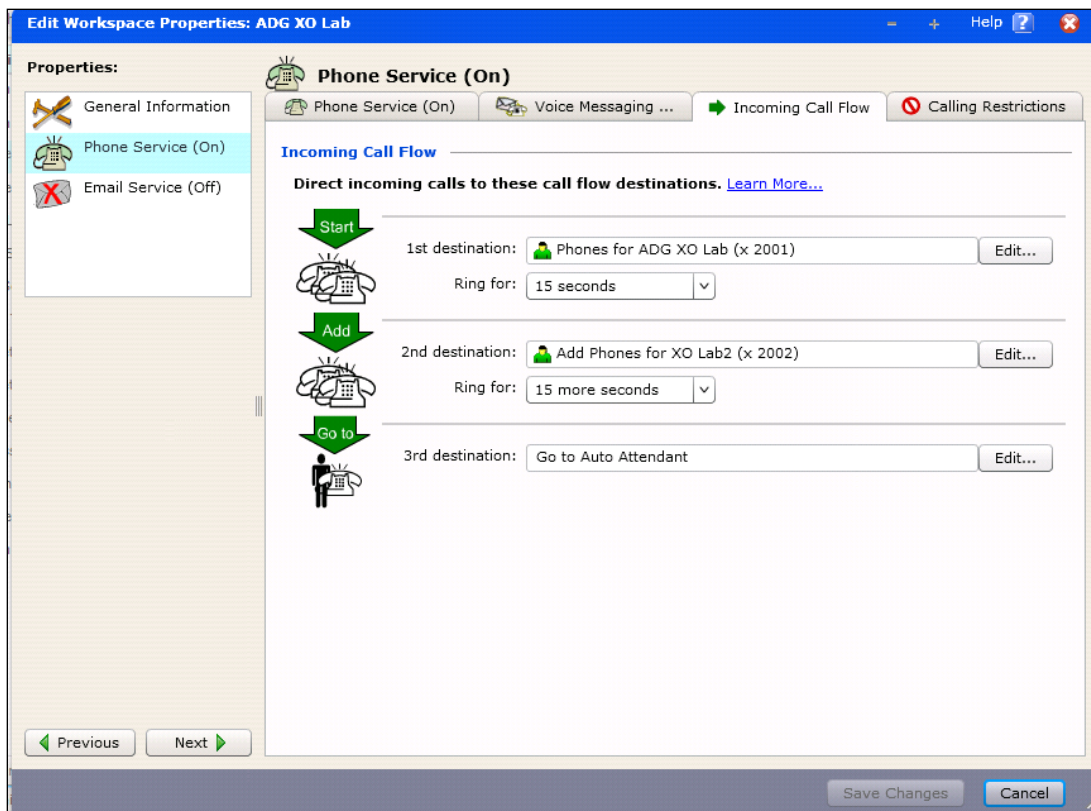
## Workspace configuration:



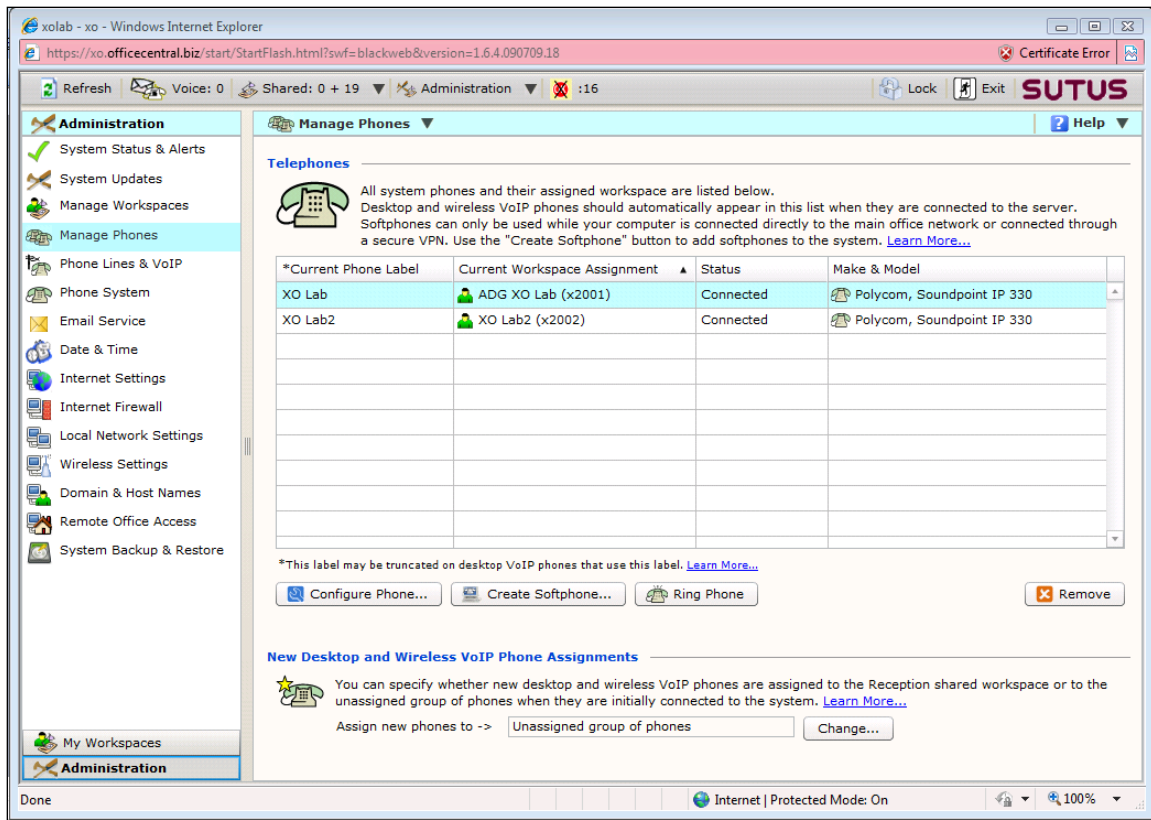
**Workspace configuration: (cont.)**



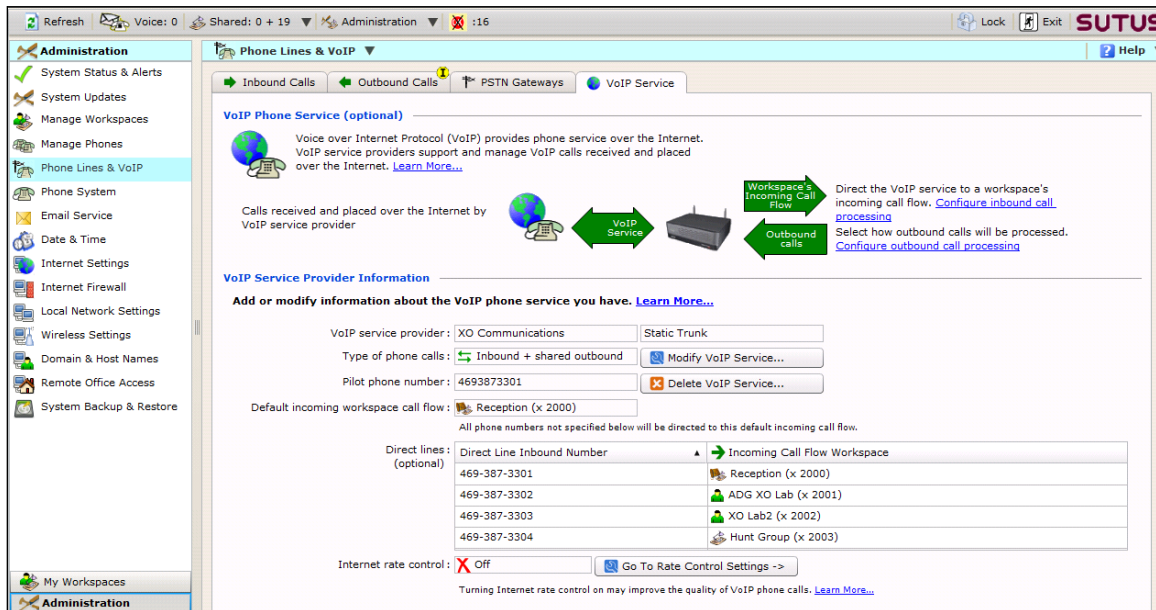
## Workspace configuration: (cont.)



## Manage Phones



## VOIP configuration:



## VOIP configuration: (Cont.)

**Edit VoIP Phone Service Provider**

**Steps:**

- 1. [VoIP Service Information](#)
- 2. [Inbound Call Processing](#)

Please contact your VoIP service provider if you need help entering this information. [Learn More...](#)

### 1. VoIP Service Information

Please select your VoIP provider and then enter the provider's service information and how incoming calls should be processed.

**VoIP Phone Service Provider**

Service provider:

Outbound caller ID:  (Company workspace's display name)

**Important >** Your VoIP service provider may use this for the outbound caller ID. [Learn More...](#)

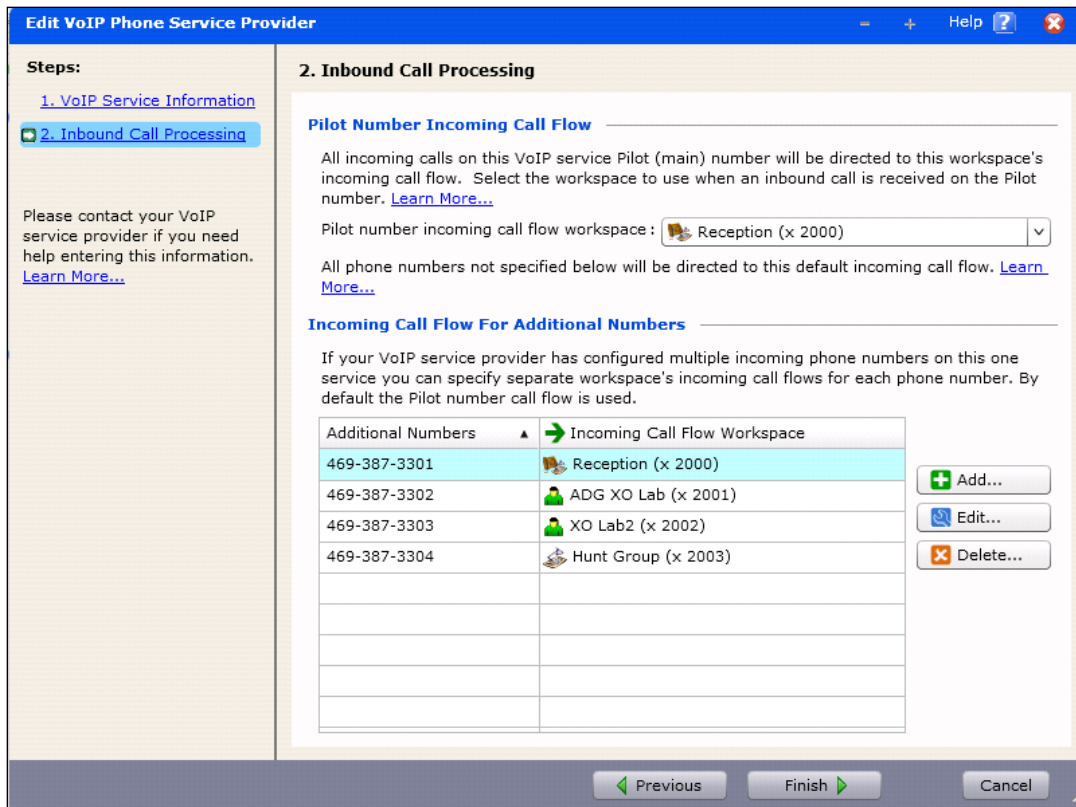
Type of phone calls:  [Learn More...](#)

**VoIP Phone Service Provider Account**

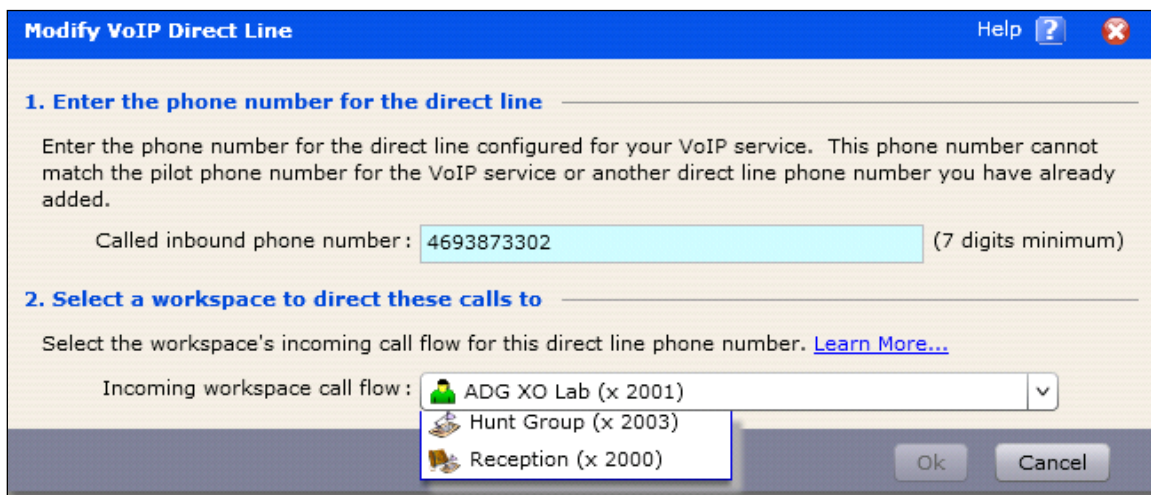
Pilot Number (Pilot phone number)

Proxy Address/Domain

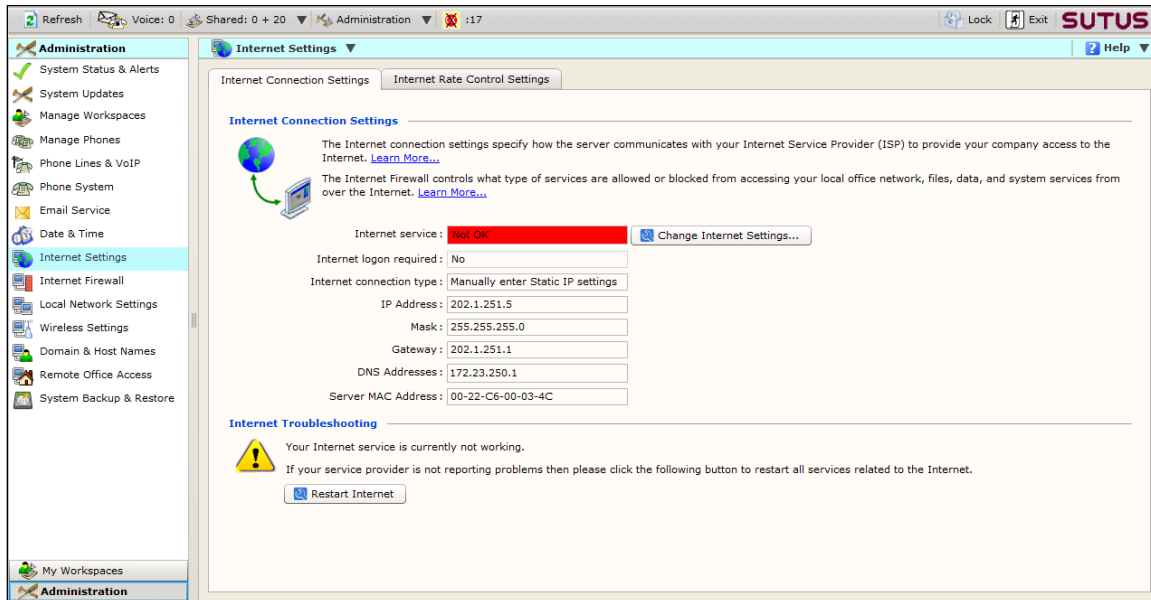
## VOIP configuration: (Cont.)



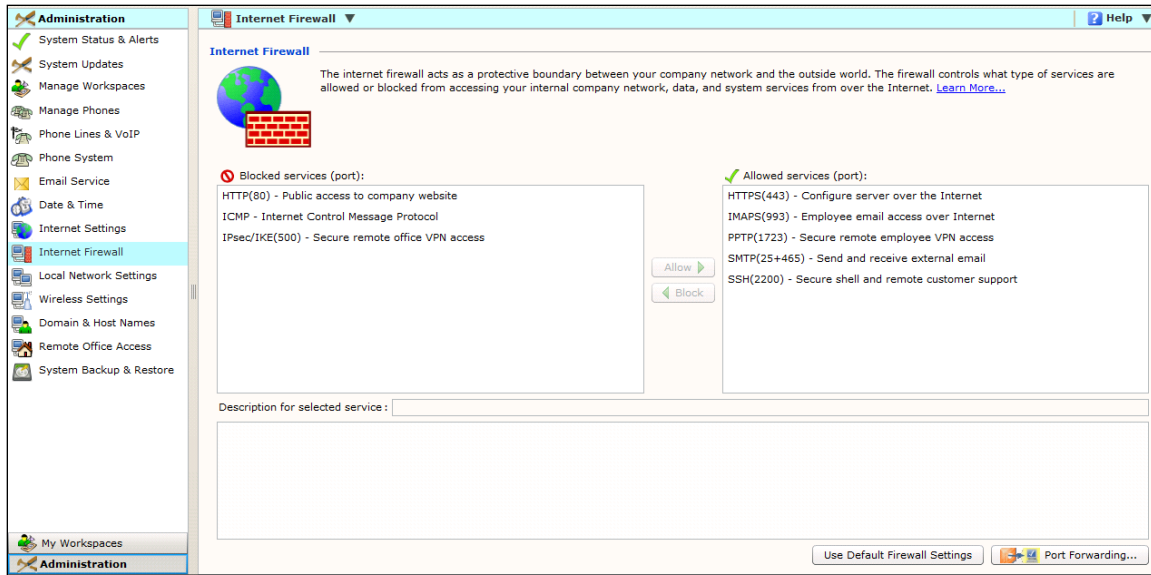
**VOIP configuration: (Cont.)**



## Internet Settings (SIP Trunk configuration):



## Firewall:



## LAN settings:

