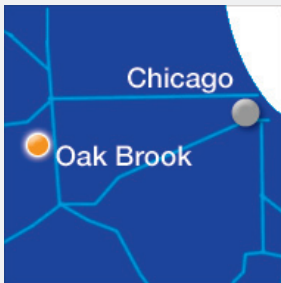


## XO<sup>®</sup> Chicago/Oak Brook Data Center

Located at 1808 Swift Drive in Oak Brook, IL, the facility is strategically positioned in the heart of the Midwest. Conveniently located within 30 minutes of Chicago, Oak Brook is a prestigious corporate community accessible by multiple routes and modes of transportation.



XO Communications has entered into a relationship with Latisys-Chicago, LLC, a Tier III and SAS 70 Type II Compliant data center, to provide state-of-the-art colocation space to our customers. At 136,000 square feet, the facility delivers world-class physical security, power availability, infrastructure flexibility and growth capacity our colocation customers require.

### State-of-the-art Security and Infrastructure

To protect your mission-critical operations, this facility maintains a tight and multi-layered security system. Video surveillance and electronic motion sensors provide continuous interior and exterior observation and 90-day retained storage. The building's single entry point is outfitted with sophisticated security sensors, vandal-resistant and bullet-proof glass, full biometric hand scanning and man-traps. In addition to the physical security features, the data center is also monitored 24x7x365, with all detected issues proactively tracked and acted upon for immediate resolution. The data center is operated via a highly secure NOC with 99.999% uptime.

One of the biggest challenges faced by many data centers is that most of them aren't equipped with the necessary power and cooling infrastructure to handle the ever-increasing technological demands. With colocation services from XO, we provide the

power infrastructure, cooling, humidity control, the backbone network, and state-of-the-art security, while you maintain full and hands-on control of your equipment inside your cage or cabinet space.

This data center is built to match the requirements of the most demanding IT environments to deliver the reliability you need to operate in a business world that never sleeps, featuring:

- N+1 uninterruptable power systems
- N+1 power infrastructure
- N+1 redundant cooling infrastructure
- Ultrasonic humidification

### Leverage Our Nationwide IP Network

XO Communications operates a nationwide multi-terabit network that delivers industry leading IP and network solutions at the fastest speeds available today. Our unrivalled network assets include nationwide IP and transport networks, metro networks, broadband wireless access and connectivity to global service locations for door-to-door delivery of customer traffic nationwide and around the world

If you need to connect directly with other telecommunication carriers, we can facilitate that with industry leading direct-connectivity options. A variety of telecommunications carriers already have presence within this facility to fulfill your Internet access or private line needs.

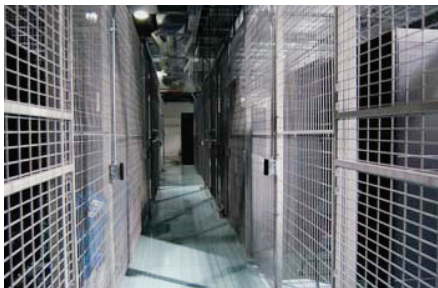
## Colocated Cabinet Solutions

Full-sized secured locking cabinets are available.



## Custom Cage Solutions

Our floor-to-ceiling cage walls can be customized to fit your specific requirements, with access only given to your designated representatives.



## Data Center Standards and Specifications

### Facility Specifications

- 136,000 sq. ft. raw, caged, micro-suite and individual cabinet space
- 17 ft. mezzanine-to-ceiling height
- 12 in. thick-steel reinforced, high-pressure concrete walls
- Slab-on-grade or pressurized raised floor options
- Building standards meet NEBS Level 3-compliance
- Fully complies with Tier III design specification standards as outlined by The Uptime Institute

- Secure exterior faux spandrel window system
- Roof is a fully adhered single-ply 60mil EPDM rubber membrane system with isocyanurate insulation

### Building Access and Security

- 24x7 building access
- 24x7 on-site security and NOC staff
- Alarm system with camera surveillance covering the entire perimeter of the building, throughout the data center area and all entrances and exits
- Secure entrances include mantraps, biometrics, key card access and multi-factor authentication
- Private parking area
- Secure loading dock

### Electrical Power Infrastructure

- Power room is a fully independent Electrical Distribution Matrix with dual ComEd source support
- On-site diesel fuel-based power generation
- Diverse power rack PDU distribution in 120/208, NEMA or IEC receptacles
- Multiple power lineups with high-density deployments available
- Redundant power infrastructure on all system levels
- Power backup systems include redundant Power Distribution Units (A+B) and UPS

### Electrical Power Generators

- Two 1.25 MW and four 2.25 MW generators
- 48-hour on-site fuel capacity per generator
- Multiple re-fueling vendors

### Facility HVAC

- Twenty 135-ton custom Trane rooftop units
- Over 1000 cfm for each supply and return
- Multiple thermal layers and real-time electronic adjustment of cooling needs for each individual cage or cabinet space
- Additional overhead cooling is available for high-density environments in raised floor areas
- Multiple CRAC units provide cooling for electrical rooms and private micro-suite data centers



### Fire Protection

- Pre-action multi-zoned VESDA smoke detection system monitoring all areas of data center
- Two-stage dry pipe suppression system with localized distribution

### Telecommunications

- In addition to XO Communications, carrier options include AT&T, AboveNet, Verizon, Level(3), and others.

### Cage Specifications

- Secure, swipe card access
- Steel cage with Maglocks
- Sliding door
- Custom configurations available

### Additional Specs

- Conference room available

### Remote Hands

Remote Hands work includes basic tasks performed by a technician who serves as your hands and eyes when you can't be there, such as:

- Equipment power on and offs, and reboots
- Plugging in or unplugging peripheral cabinet devices
- Tape changes for a tape drive or library
- Moving network cables
- Hot-swappable hardware replacement (those not requiring system removal or shutdown)

### Smart Hands

Smart Hands\* work extends beyond basic tasks that can be performed by support specialists and include:

- System administration tasks in a supported OS (Windows and Red Hat Linux variants)
- Hardware replacements (non hot-swappable)
- OS reload
- Data migration (within network)
- System component upgrades (php/mysql version upgrades and more)

### Expert Hands

Expert Hands\* work is performed by, or in coordination with, Tier III Engineering staff. These expert-level tasks may include:

- Network infrastructure configuration
- Complex OS or application level configurations or management
- Fiber or cable terminations
- Complex cabling projects

---

*\*Support specialists are able to quickly review and confirm the supportability of your requests 24x7x365. Smart Hands & Expert Hands tasks are subject to availability of staff and subject matter expertise.*

### About XO Communications

XO Communications is a leading nationwide provider of advanced IP communications, managed network and IT infrastructure solutions for businesses, enterprises, government, carriers and service providers. Its customers include more than half of the Fortune 500, in addition to leading cable companies, carriers, content providers and mobile network operators.

Utilizing its unique combination of high-capacity nationwide and metro networks and broadband wireless capabilities, XO Communications offers customers a broad range of managed voice, data and IP services with proven performance, scalability and value in more than 85 metropolitan markets across the United States.



**For more information,** call your XO sales representative, or visit [www.xo.com](http://www.xo.com)

Solutions Built Around You.